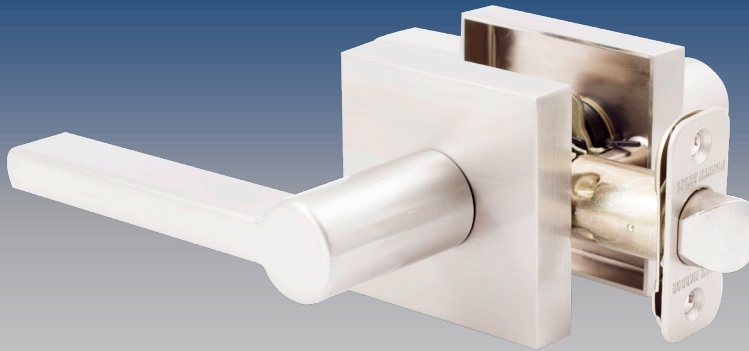


# Vienna Lever



## Functions:

### Passage/Hall/Closet

*Both levers are always free.*

### Privacy/Bed/Bath

*Both levers are locked and unlocked by a push button on the inside rosette. The exterior lever can be unlocked with an emergency key.*

### Keyed Entry

*Both levers are locked and unlocked by a turn button on the interior side or a key on the exterior side.*

### Surface-Mounted Dummy

*For use as a pull or a decorative lever. No operation.*

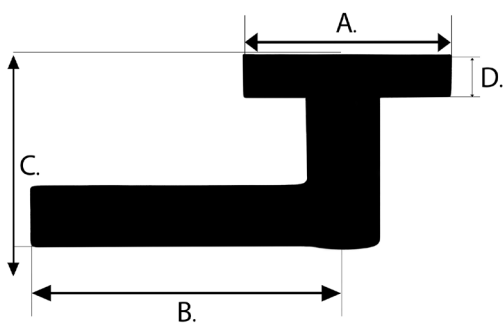
## Vienna Lever Dimensions:

A: 2-1/2"

B: 4-1/4"

C: 2-1/2"

D: 1/2"



## Specifications:

### Door Prep (for passage / privacy / entry functions)

*2-1/8" cross bore*

*1" edge bore*

*1" x 2-1/4" latch face*

### Backset

*Easily adjustable latch from 2-3/8" to 2-3/4."*

### Door Thickness

*Fits 1-3/8" to 1-3/4" standard doors.*

### Cylinder

*KW1 or SC1 keyways are available.*

### Latch Faceplates

*Vienna levers come standard with round corner, square corner, and drive-in faceplates.*

### Strikes

*Includes a 2-1/4" tall, full lip 1/4" round corner strike.*

### Bolt

*1/2" throw*

### Door Handing

*Fits both left and right-hand doors.*

### ANSI/BHMA

*Meets A156.2 Grade 3 requirements.*

## Available Finishes:

Vintage Bronze (11P)      Matte Black (19)

Satin Nickel (15)      Polished Chrome (26)

## Stone Harbor Hardware

P.O. Box 1961 • Appleton, WI 54912

www.stoneharborhardware.com • 877-556-8483

© 2011 Stone Harbor Hardware LLC